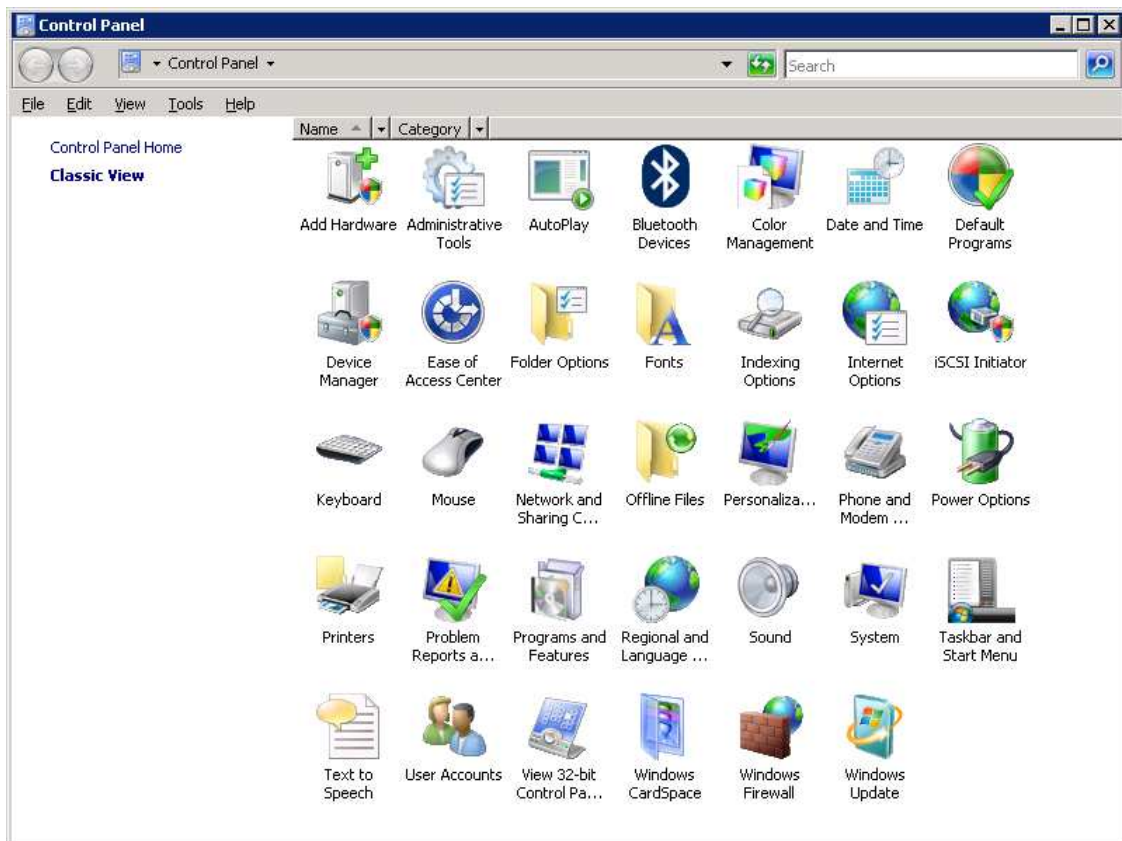


Detecting the Number of Processor under Windows 2008 Server Running Hyper-V

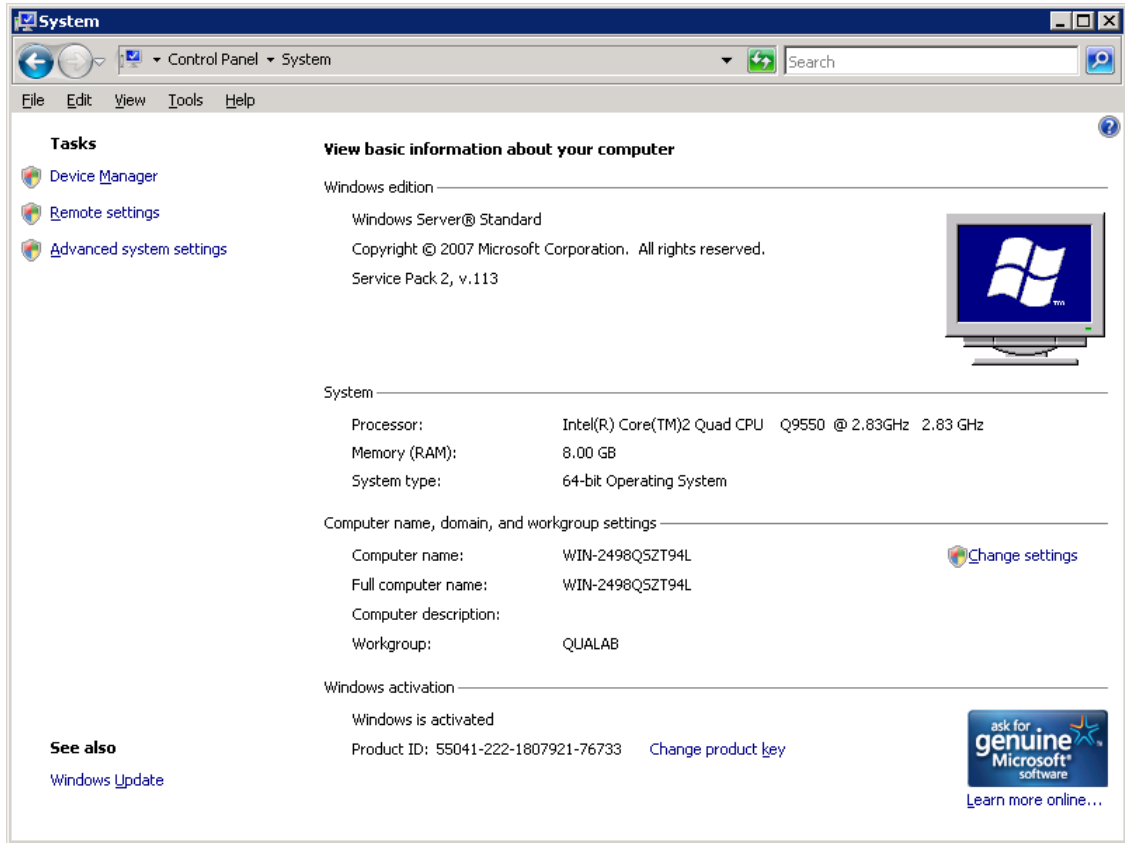
With the release of Diskeeper's new *V-locity* product for Windows 2008 Server running Hyper-V, Diskeeper has changed the way that software licenses are sold for the *V-locity* product only. *V-locity* is priced by the number of cores on the server which is running the *V-locity* host software. This pricing is similar to how Microsoft prices Windows 2008 Datacenter Edition.

The following information should help your customers determine the number of cores on their server to ensure that *V-locity* is properly licensed for their enterprise. **Please note that this procedure will need to be performed on each physical server where *V-locity* host will be installed.**

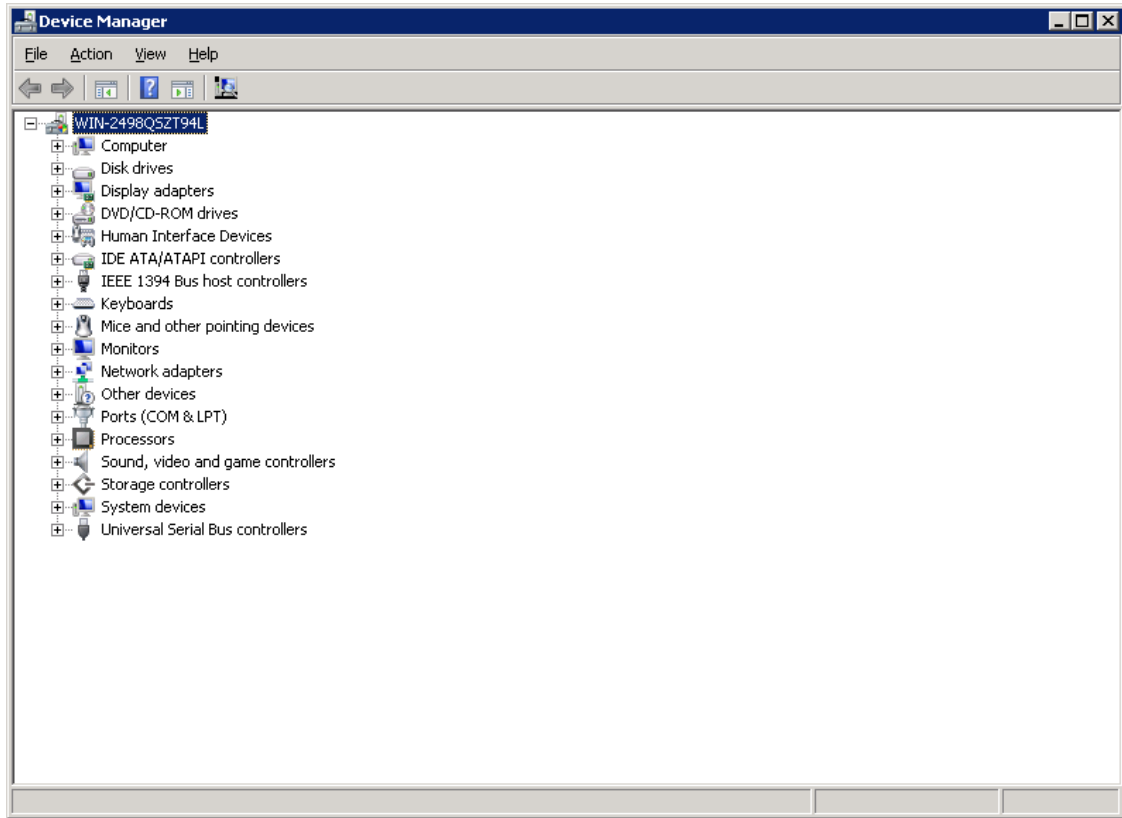
To determine the number of cores under Windows 2008 server, select **Start – Settings - Control Panel**. This will bring up the following screen.



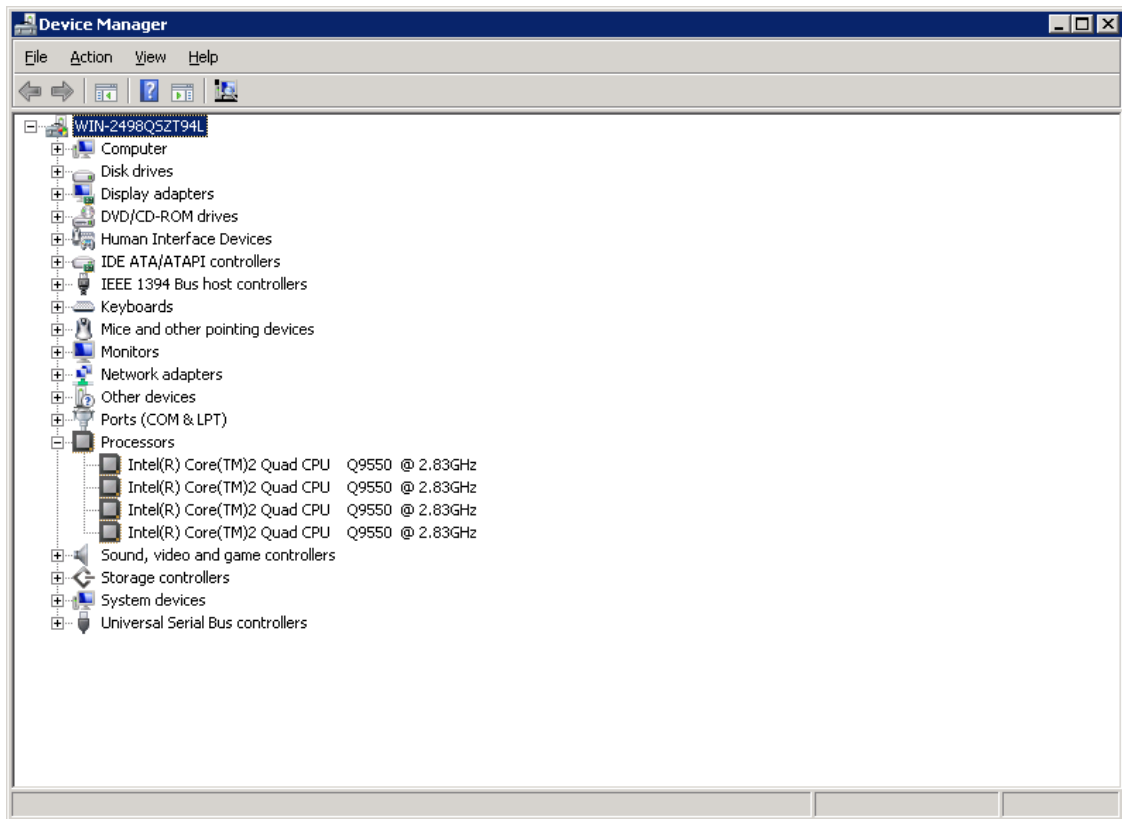
Double-click on the **System** icon to bring up the following screen.



Click on **Device Manager** on the left-hand side under **Tasks** to bring up the following screen,



Move down to **Processors** and select + (the plus sign) to expand information on the number of processors detected by Windows Server 2008.



Count the number of processors and this information will be the number of cores (licenses) which you will need to buy for *V-locity* for this specific server. In this particular example, the user will need to purchase 4 licenses for 4 cores.

Please repeat this procedure for each physical server where *V-locity* will be installed.