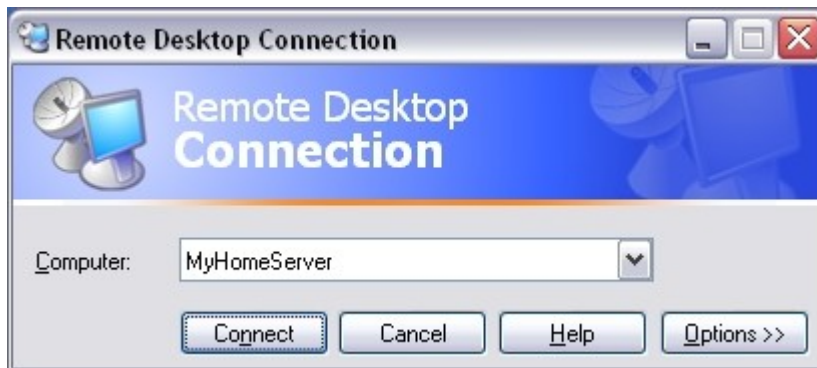


# Installing Diskeeper® HomeServer on Windows® Home Server Systems

The Microsoft® Windows Home Server (WHS) operating system is primarily intended to run on a “headless system”, meaning it typically has no keyboard or monitor. Instead, most Windows Home Server system management is done via the Windows Remote Desktop Connection feature from a separate Windows XP or Windows Vista® computer. These instructions follow this model, and assume that you are familiar with connecting remotely to your Windows Home Server system.

Follow these steps to install Diskeeper HomeServer on your Windows Home Server system and add it to the Windows Home Server Console:

1. If you have not done so already, copy the Diskeeper HomeServer installation file into a shared folder that is accessible to the Windows Home Server system.
2. Connect to your Windows Home Server system via the Windows Remote Desktop Connection.



Be aware that a message will be displayed when you connect warning about installing software on the Windows Home Server desktop. The warning message can be disregarded in this case, since Diskeeper HomeServer is specifically designed to safely install and run on Windows Home Server systems.

3. Open My Computer on the Windows Home Server system and navigate to the Diskeeper HomeServer installation file. Double-click the file to start the installation.



4. Follow the prompts displayed as the Installation Wizard guides you through the installation. You are given the opportunity to enable Automatic Defragmentation of all the volumes on your Windows Home Server system. Enabling Automatic Defragmentation allows Diskeeper with InvisiTasking™ to keep the performance and reliability of your Windows Home Server disk volumes at their peak levels, in a truly invisible, Set It and Forget It® manner.

If you are installing the full version of Diskeeper HomeServer (not the trial version), you are also given the option to allow Diskeeper to be activated silently, with no intervention from you. If you choose to activate the software later, see the instructions later in this document for information about accessing the Diskeeper Action menu.

Lastly, you can specify the destination folder for the Diskeeper installation. By default, Diskeeper will be installed at C:\Program Files\Diskeeper Corporation\Diskeeper\.

When the installation is complete, click **Finish** to close the Installation Wizard.

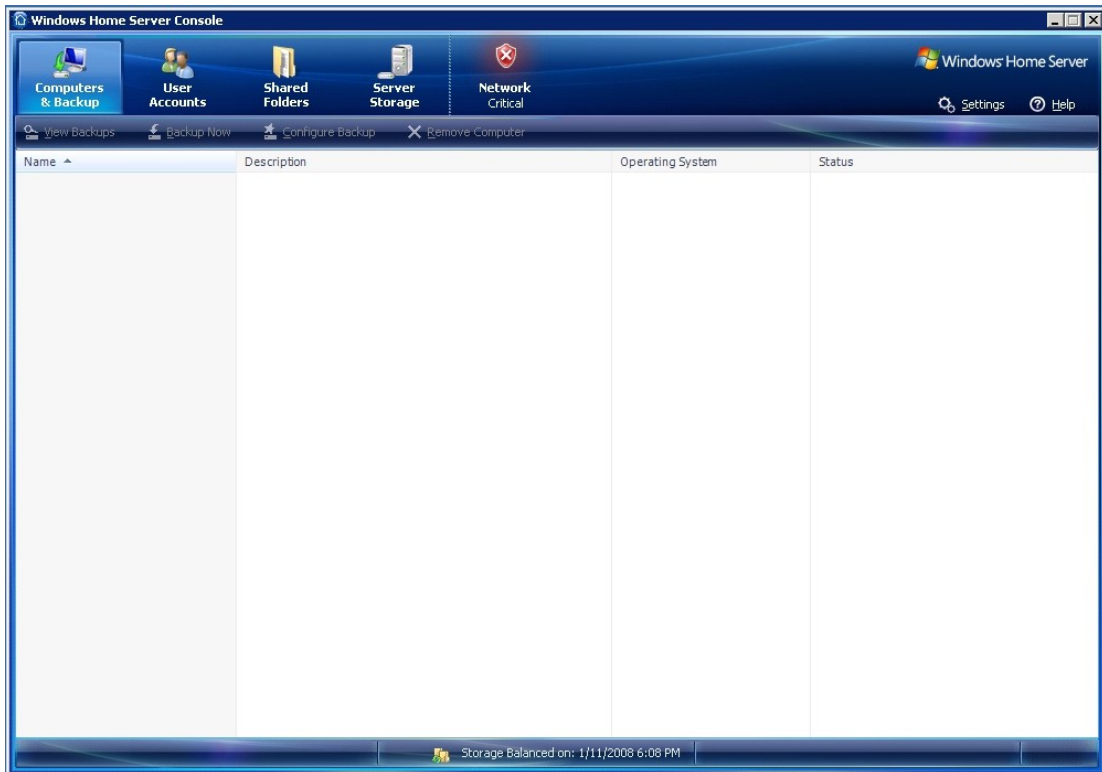


After Diskeeper has been installed, it is necessary to add it to the Windows Home Server Console. Follow these steps:

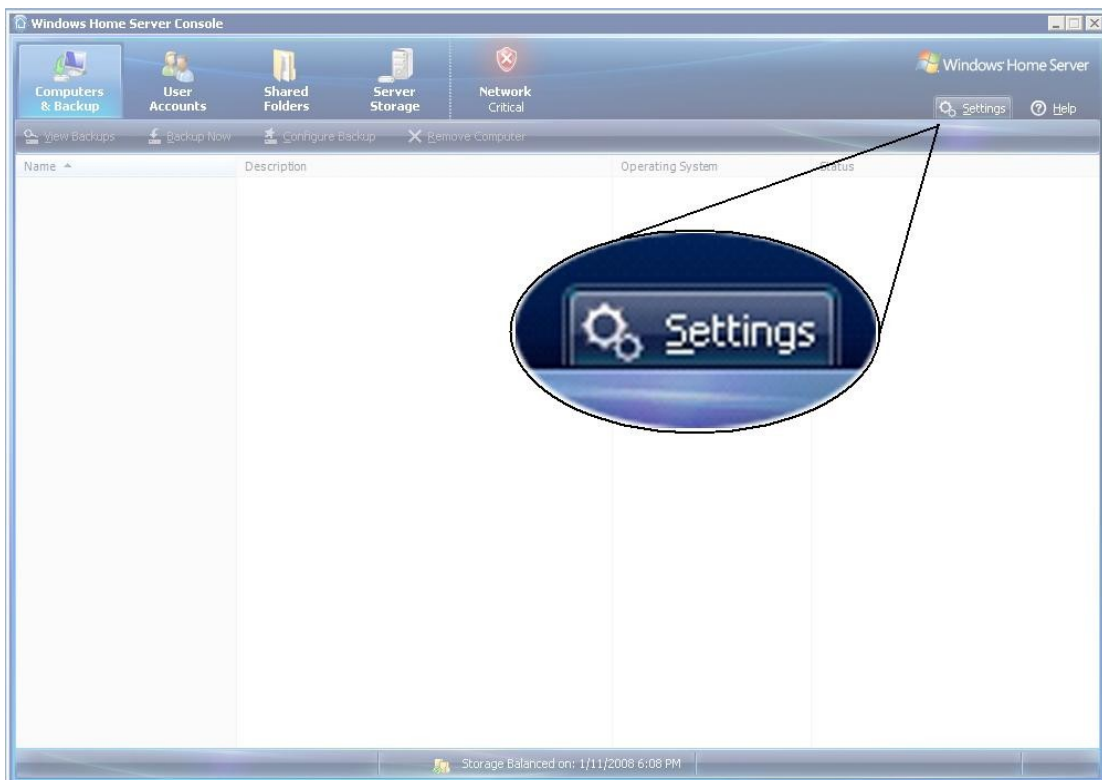
1. Open the Windows Home Server Console by double-clicking the appropriate shortcut on your Windows Home Server desktop.



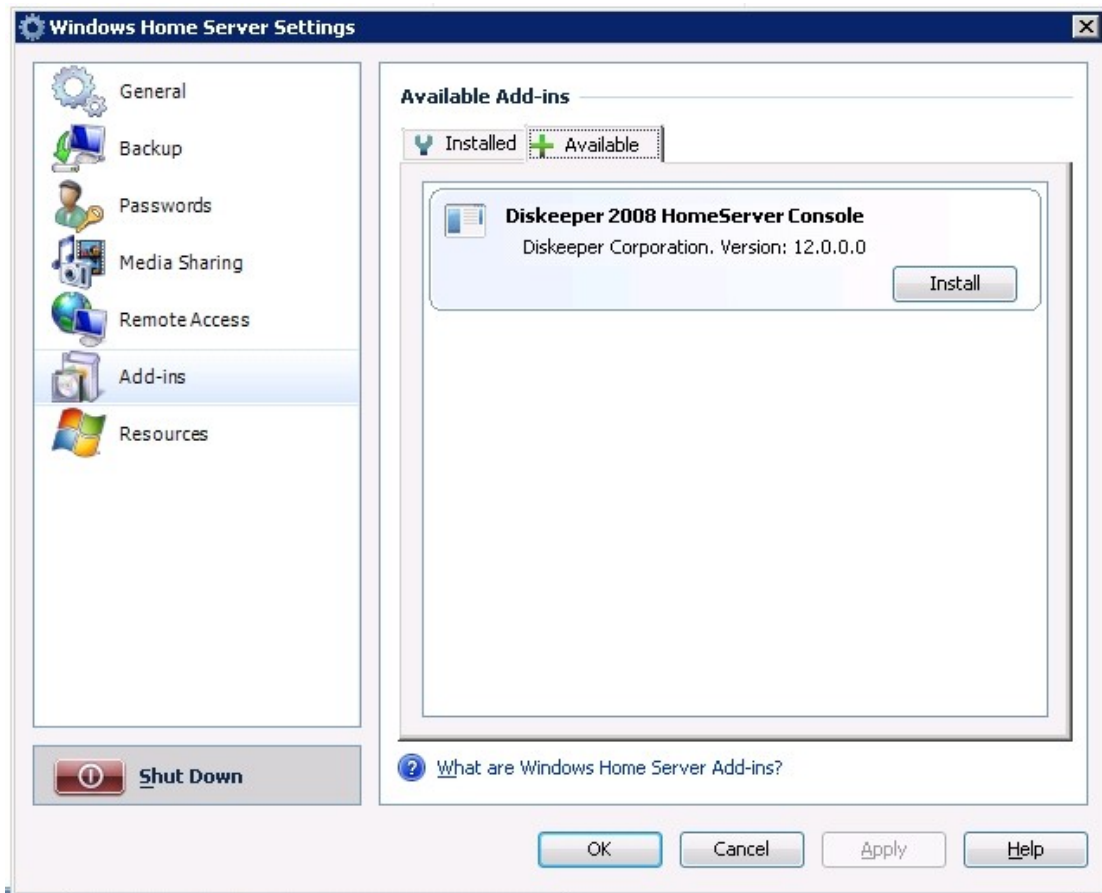
This will open the Windows Home Server Console.



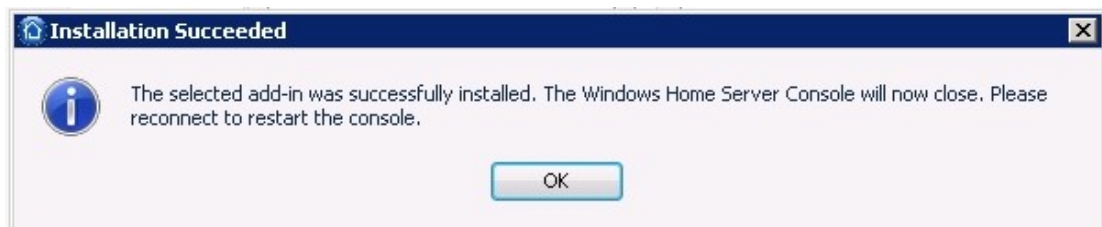
2. Click **Settings** to open the Windows Home Server Settings Console.



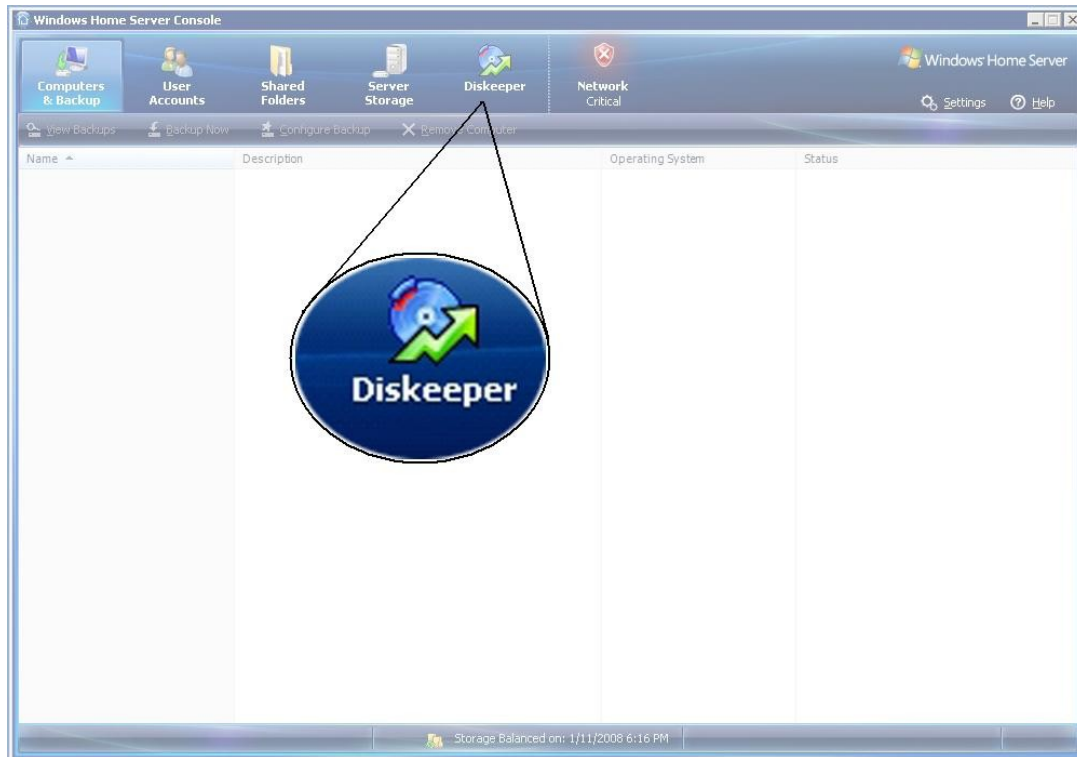
3. Click **Add-ins** in the task pane on the left side of the Windows Home Server Settings Console, then click the **Available** tab in the Available Add-ins area. You will see the Diskeeper HomeServer Console listed as an available Add-in.



4. Click **Install** to install the Diskeeper HomeServer Console Add-in. After the installation is complete, it is necessary to close the Windows Home Server Console.



5. When you restart the Windows Home Server Console, you will see a new toolbar icon for Diskeeper. Click this icon to open Diskeeper HomeServer within the console.



After opening Diskeeper, you can change any of the settings via the toolbar buttons and the Quick Launch task pane as described in the Diskeeper Help and User's Manual. Of course if you enabled Automatic Defragmentation during the installation, there is no need to make any changes. Your file fragmentation will be handled automatically and invisibly by Diskeeper using the InvisiTasking advanced background processing technology.

**Note:** If you chose not to activate silently Diskeeper during the installation, you will be reminded to do so each time you open Diskeeper. If, for some reason, you do not choose the **Activate Diskeeper Now** option in the reminder dialog box, you can do so by using the **Activation** option on the Action menu in Diskeeper. The Diskeeper Action menu is not displayed in the Windows Home Server Console. Instead, you must open Diskeeper from the Windows Home Server Start button. Click **Start | Programs | Diskeeper Corporation | Diskeeper** to open Diskeeper in this manner on the Windows Home Server system.

© 2008 Diskeeper Corporation. All Rights Reserved.

Diskeeper, InvisiTasking, and "Set It and Forget It" are either registered trademarks or trademarks of Diskeeper Corporation in the United States and other countries.

Microsoft, Windows, and Windows Vista are either registered trademarks or trademarks owned by Microsoft Corporation in the United States and/or other countries.

All other trademarks are the property of their respective owners.